



Defang Technology

Who We Are

Defang Technology is a leading provider of voice, video and data connectivity products and solutions

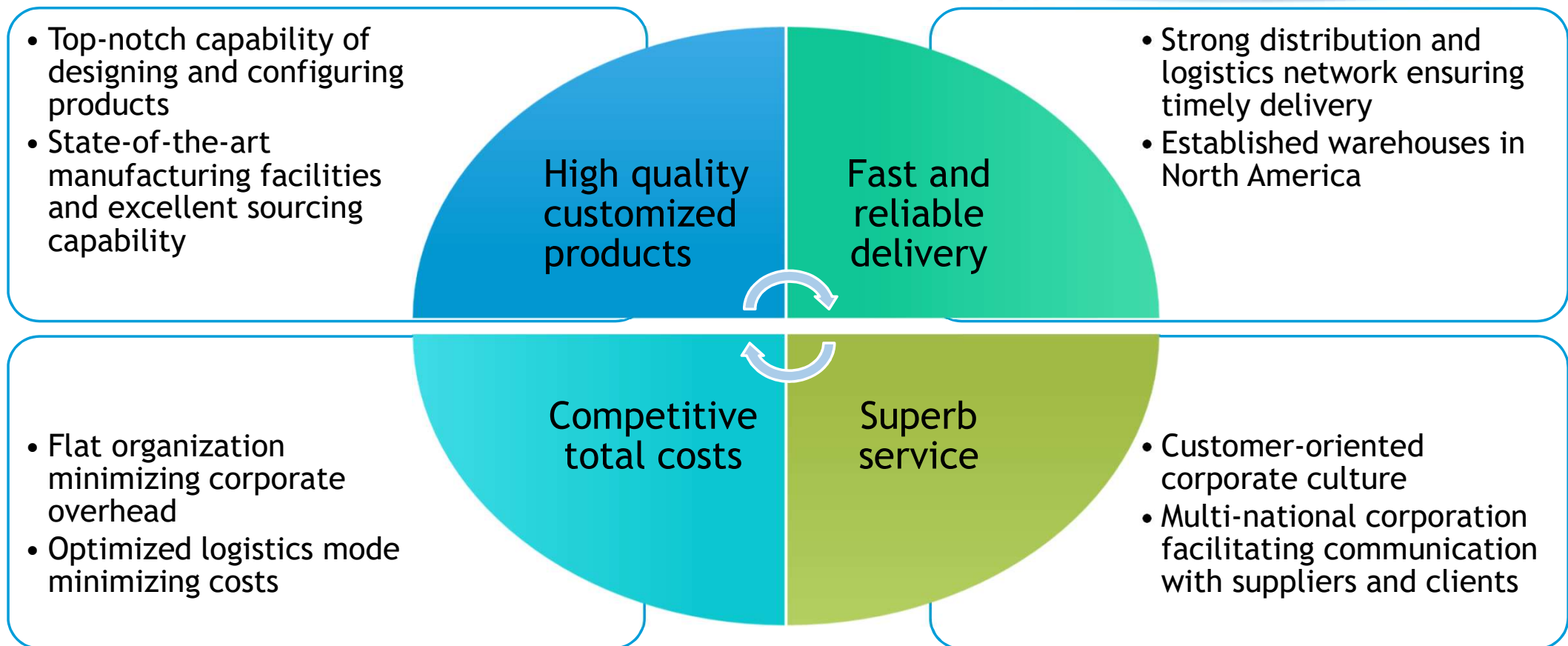
What We Do

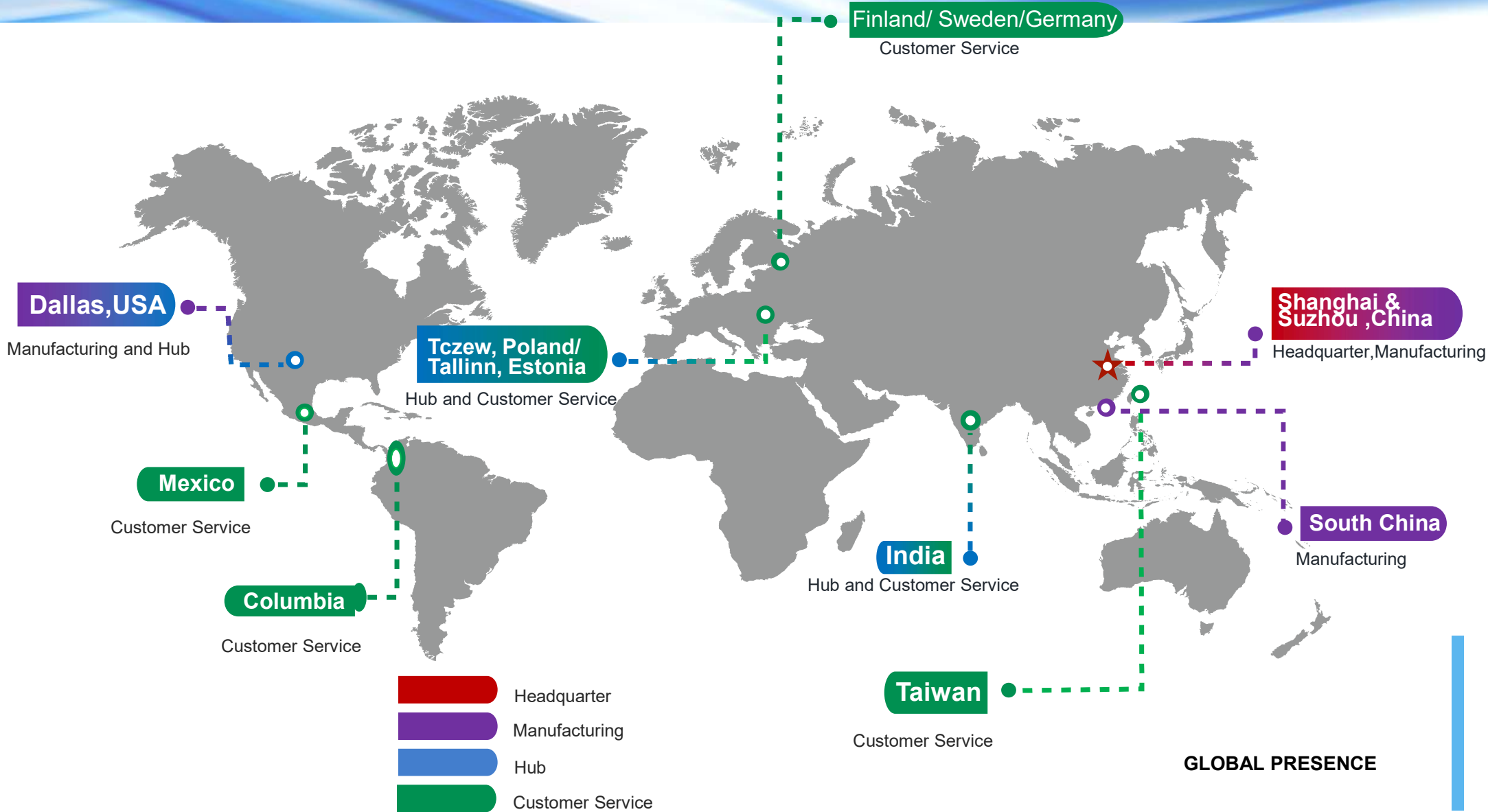
Defang serves the telecommunications, electronics and broadband data communication industries by offering a wide range of customizable connectivity products and solutions surpassing clients' requirements at optimized total costs



Ownership

- Registered in Hong Kong in 2009, Defang is a subsidiary of Shanghai Lingang Telecommunication Network Co., Ltd.
 - ✓ Specialized in telecommunication projects including both hardware and software
 - ✓ Cable TV, broadband and wireless
 - ✓ Over 15 years of experience within China
- Defang focuses on serving overseas markets, with clients in 20 countries and regions around the globe





Cable TV



Power Supply Products Introduction

- Completed Power Supply Product Line supporting all major cable TV set box brands
 - Motorola, Scientific Atlanta, RCA, Arris, AMBIT Broadband, SMC Networks, CISCO, ZTE, etc
 - Both desktop and wall type power supplies available
- Customer Choice to supply from original approved power supply manufacturer or Defang's own brand
- Approved Certificate to be used in American market (UL and CSA, etc)

HDMI Cables

- HDMI cables in all grades and length
- Generic to premium design
- Retail version also available
- Extra shielding to achieve EMI requirement
- Supporting true 4K resolution and 3D
- Supplying 1.3v, 1.4v and future 2.0v



Shell color: blue / green / gold / purple / red / pink / silver....



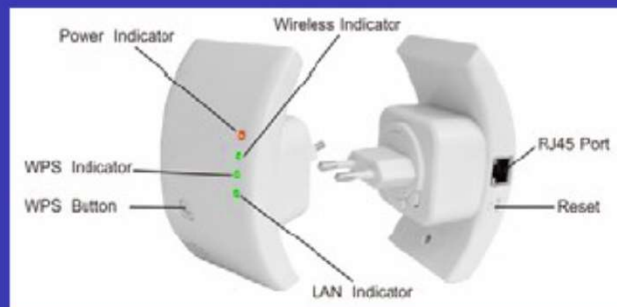
Fiber Cable Assemblies and Accessories



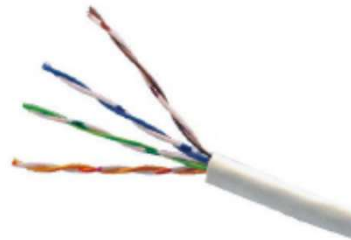
- **Comprehensive Product Line**
 - Defang produces a wide variety of fiber cable
 - assemblies and accessories designed to meet the specific application needs of our customers.
- **Stringent Manufacturing Processes**
 - Defang's polishing techniques, rigorous evaluation of fiber glass, serialized tracking and the strictest testing processes allow us to meet some of the strictest specifications in the industry
- **Quality Assurance**
 - Defang uses Corning fiber glass, one of the best fiber glass in the industry. Defang tests every connector and applies a bar code traceable to the exact insertion loss and return loss for that termination.



Access Point – Wifi Products



Other CATV Products

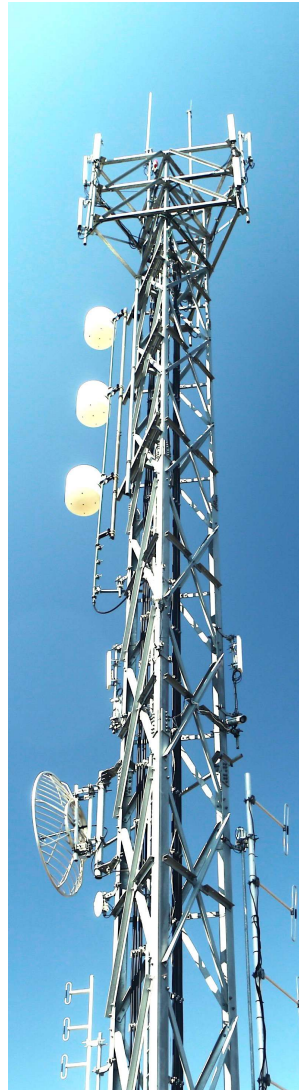
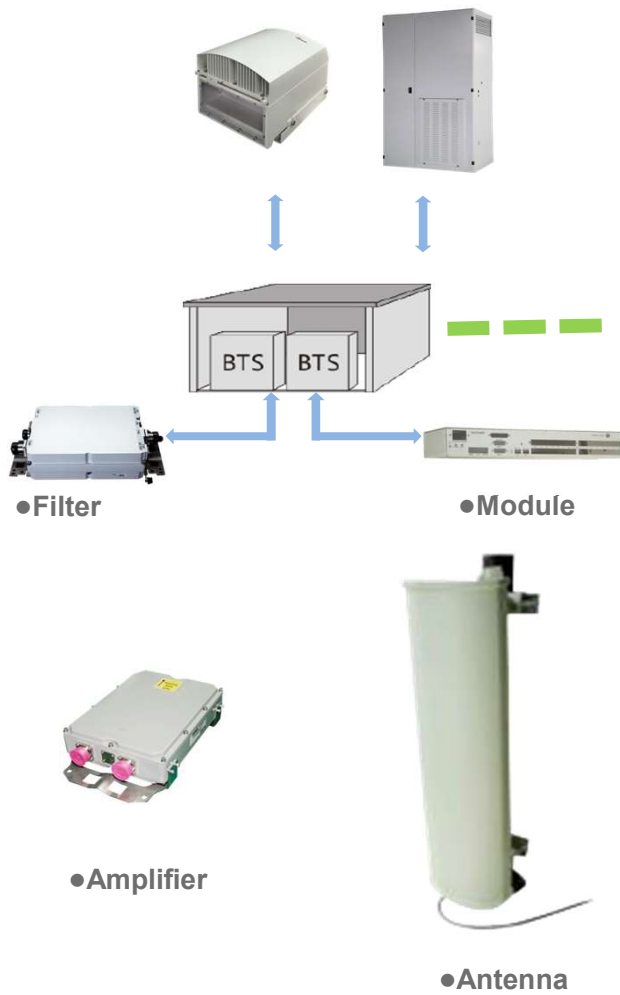


- Completed retailing package for consumer use
- Made to order per customer needs also available

Selected Clients (Over 150 Customer in American Market)



●Heat Sink ●Cabinet



Telecommunication



NOKIA

Amphenol



ciena

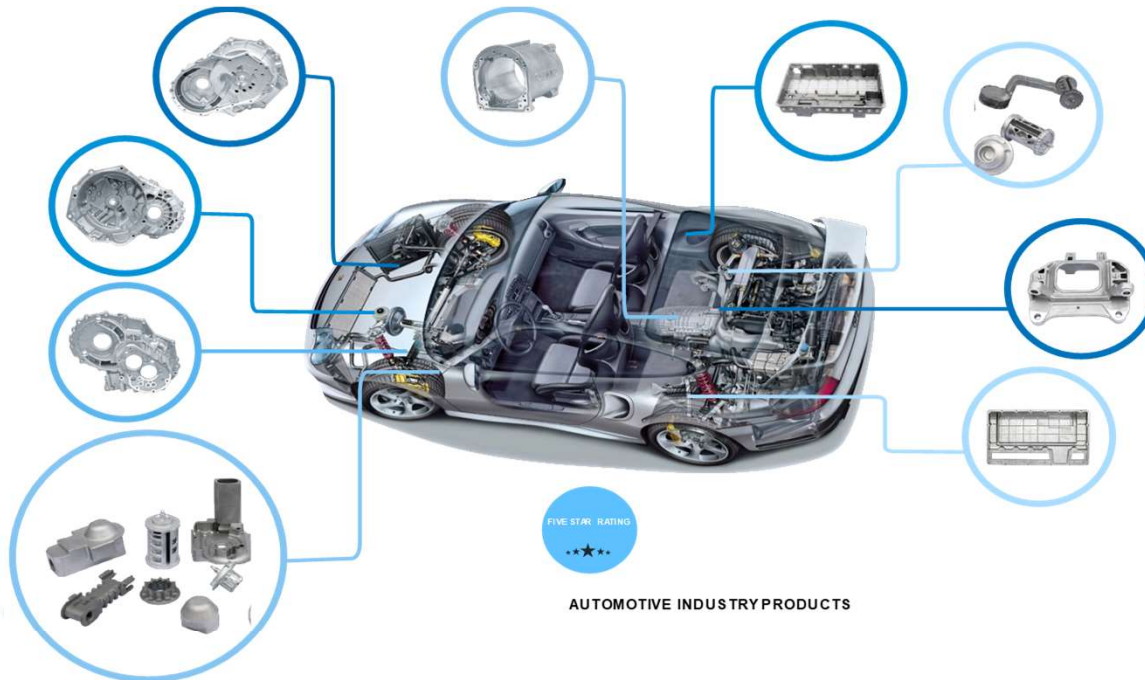
Quintel

KATHREIN



YAGI

Automobile

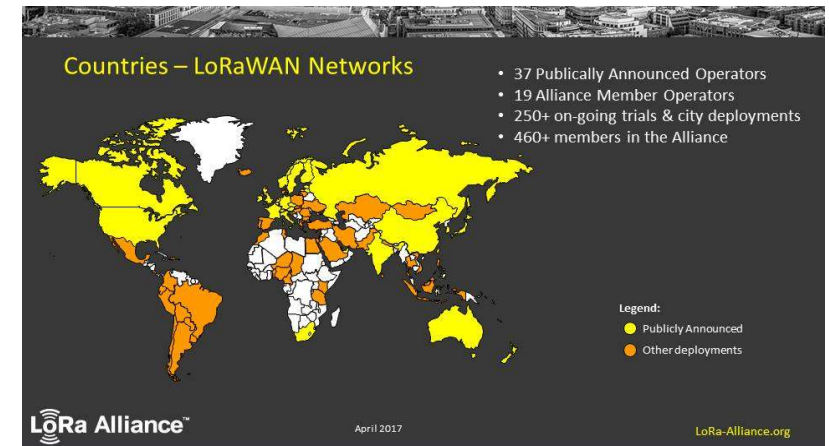
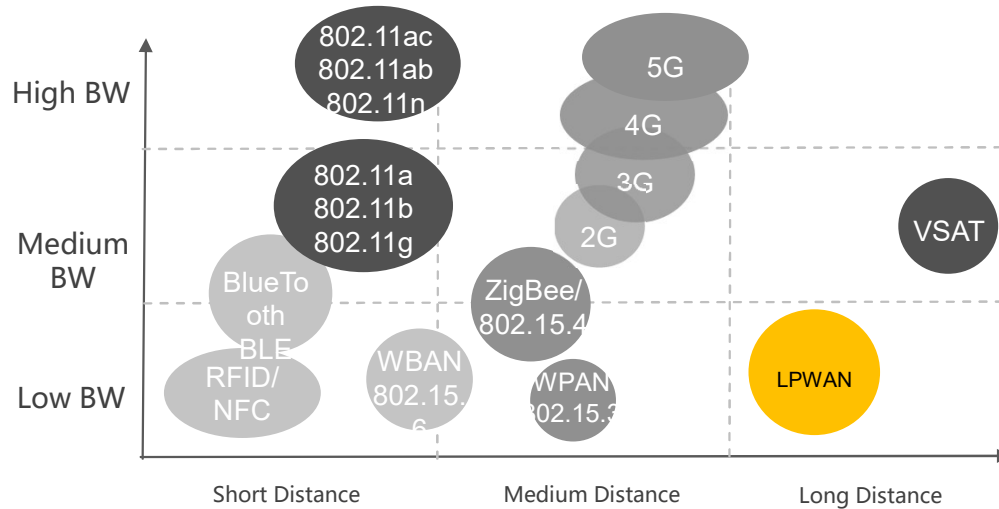


AUTOMOTIVE INDUSTRY PRODUCTS



Internet of Things (IoT)

IoT Technology Comparison



Technology	802.11a h	WLAN	ZigBee	LTE-M	Sigfox	LoRa
Sensitivity	-106 dBm	-92 dBm	-100 dBm	-117 dBm	-126 dBm	-142 dBm
Link Budget	126dB	112dB	108dB	147dB	146dB	162dB
Range(O=Outdoor, I=Indoor)	O: 700m I: 100m	O: 200m I: 30m	O: 150m I: 30m	1.7km urban 20km rural	2km urban 20km rural	3km ruban 30km rural
Data Rate	100kbps	6Mbps	250kbps	1Mbps	600bps	37.5-0.200kbps
TX current consumption	300 mA 20dBm	350 mA 20dBm	35 mA 8dBm	800 mA 30dBm	120 mA 20dBm	120 mA 20dBm
Standby current	NC	NC	0.003mA	3.5mA	0.001mA	0.0018mA
RX current	50mA	70mA	26mA	50mA	10mA	10mA
Battery life 2000mAh				18 months	90 months	105 months
Localization	no	1-5m	no	200m	no	10-20m
Interference Immunity	moderate	moderate	bad	moderate	bad	good
Network Type	Star	Star	Mesh	Star	Star	Star



The Defang (LPWAN) Difference

- Uses LPWAN to transmit sensor data to Gateways
- LPWAN doesn't suffer drop outs
- Long Reach 20km+ in wide-open spaces
- Low Energy - Allowing for 10+ year battery life
- Listen-before-talk- technology allows data transfers at most opportune times

e2e LPWAN Solutions



HARDWARE

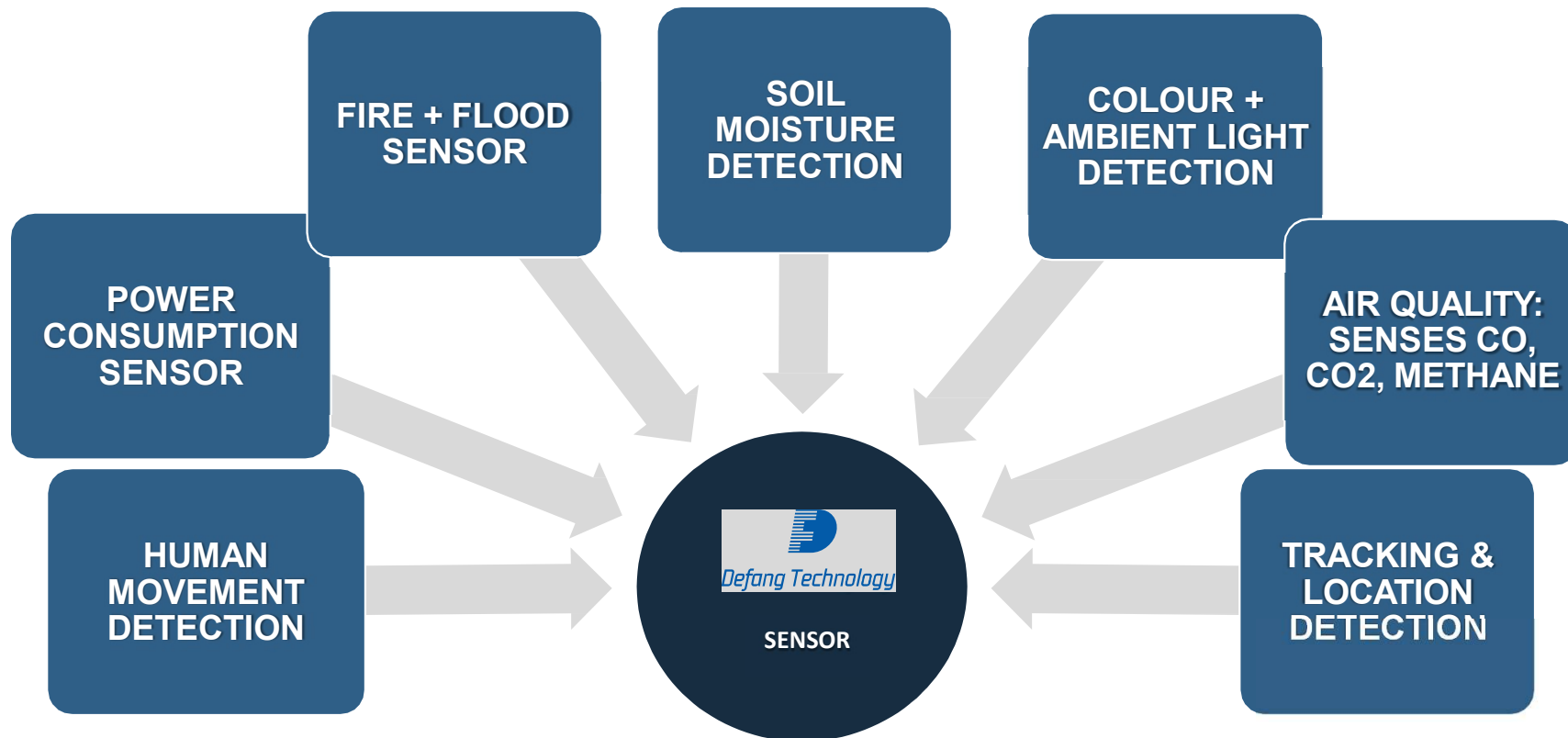


SOFTWARE



***CLOUD + REPORTING
SERVICES***

SMARTER SENSORS & CAPABILITIES

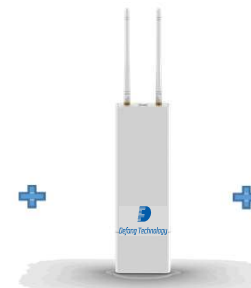


Applications



CONNECTING SMART HOMES

- **Movement Detection** (*Home Security*)
- **Smoke & Fire Detection** (*Insurance*)
- **Temperature Regulation** (*Cost Effective*)
- **Energy Meter** (*Environmentally Friendly*)
- **Smart Lighting** (*Home Comfort*)





Defang Technology